

## BETAETIGER-S-G-SN-C2115 (Order no. 097861)

### Actuator S for safety switch SGA/SGP/STA/STP/STM

- ▶ Two safety screws included
- ▶ Physically compatible with TP actuator P-G



### Notice

S-...-SN actuators must not be used in conjunction with insertion funnels. S-...-LN actuators must be used for insertion funnels.

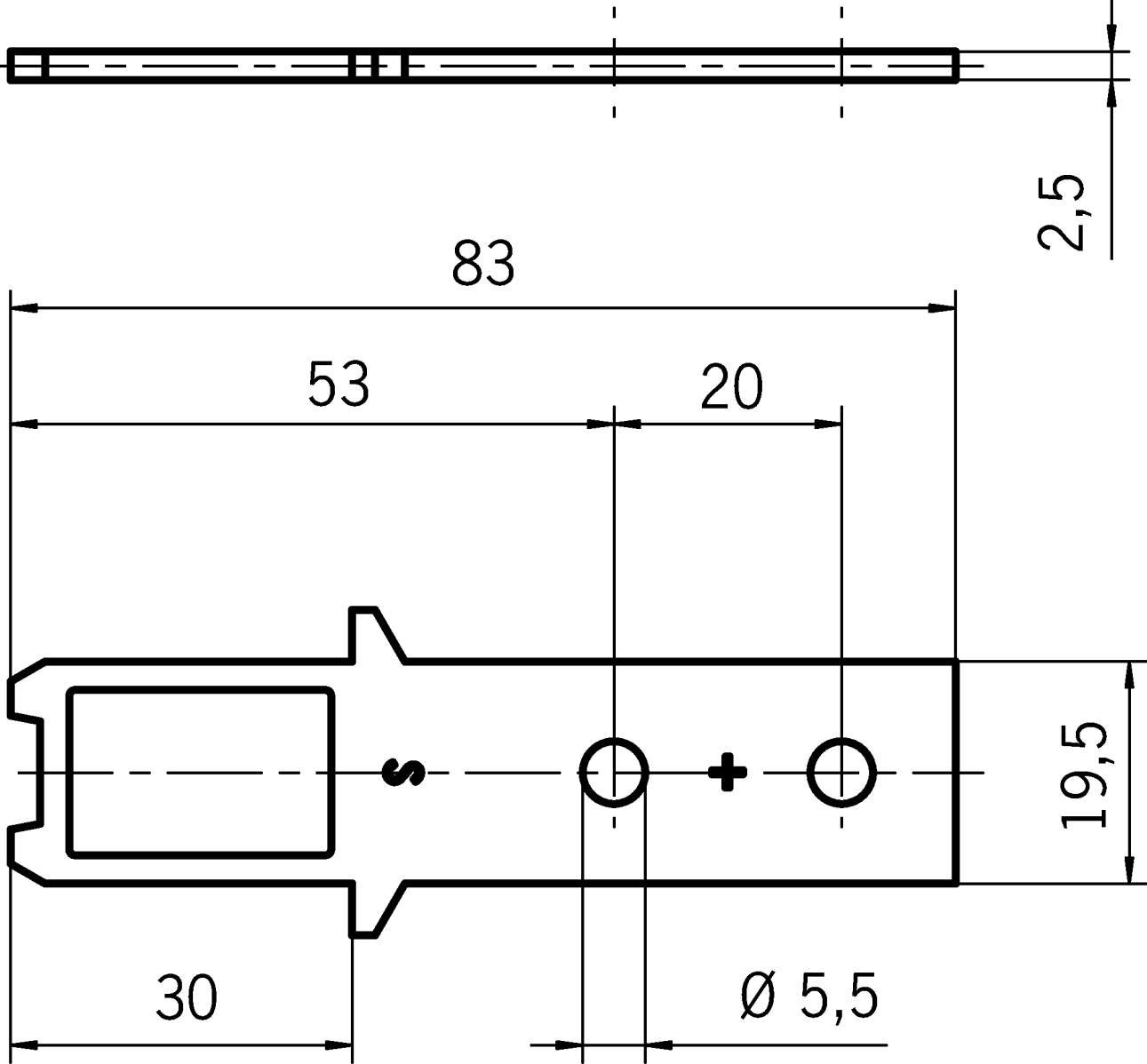
### Straight actuator

Suitable for a maximum tensile force of 3,000 N. The straight actuator is used on sliding doors or hinged doors with door radii greater than 300 mm. Safety screws prevent unscrewing of the actuators.

### Screws made of stainless steel

The safety screws included can be inserted with a normal tool, but cannot be removed again.

Dimensional drawings



## Technical data

### Approvals



### Mechanical values and environment

Overtravel	max. 5 mm
------------	-----------

Door radius	min. 300 mm
-------------	-------------

Material	
----------	--

Screw	Stainless steel
-------	-----------------

Actuator	Stainless steel
----------	-----------------

### Miscellaneous

C number	Actuator with same installation dimensions as TP actuator
----------	---

Usability of insertion funnel	no
-------------------------------	----

## Downloads

All documentation for this material can be found on our website:

<https://www.euchner.de/en-us/a/097861/?#downloads-tab>

**Ordering data**

Ordernumber	097861
Item designation	BETAETIGER-S-G-SN-C2115
Gross weight	0,03kg
Customs tariff number	85389099990
ECLASS	27-27-26-06 Actuator for safety-related position switch

## Accessories

### Mounting accessories

#### Safety screws M5 x 10

**073455**

M5X10-NIRO/V100

- ▶ Safety screws M5 x 10
- ▶ Packaging unit 100 pieces